

Table of Contents

INTRODUCTION

- Overview.....1

STREAMLINE CONSOLE

- Overview.....2
- Features.....2
- Packing List.....3
- Assembly..... 4 ~ 6
- Installation.....7
- Front Panel.....8
- Specifications9



Please read this manual thoroughly and follow the **Installation** procedures to prevent any damage to the StreamLine or any connected device.

----- **Introduction**

● **Overview**

The StreamLine offers the ultimate in styling and computer management. With a keyboard, mouse, TFT LCD panel and an 8-port KVM switch housed in an industry standard 19" 1U-height rack drawer, it saves you up to 1/3 of valuable real estate from a rack cabinet. Better yet, when the StreamLine Console is cascaded with other StreamLine KVM switches to increase server management capacity, you save even more!

StreamLine's unique extension accessories can accommodate it with rack cabinet depth of only 20" (50 cm) and up. Now, equip your rack cabinet with the StreamLine, throw away the bulky VGA monitor, keyboard and mouse, and StreamLine your computer management.

Master-IT StreamLine Console

It saves you up to 1/3 of valuable rack cabinet spaces and acts as a space-saving console with keyboard, mouse and monitor. It can be connected to a computer directly or to the console ports of a KVM switch.



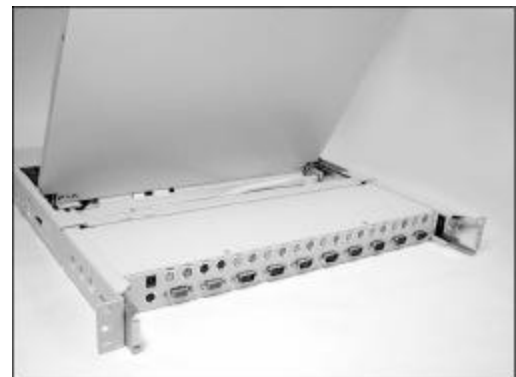
StreamLine Console with One-Console StreamLine KVM Switch

This powerful combination allows you to access multiple computers from **one** keyboard, mouse and monitor on the StreamLine drawer. Operation is as simple as pressing push button, entering hot-key command and navigating through the user-friendly OSD (on-screen display) menu. With an SK-18 connected, it switches up to 8 IBM-compatible computers.



StreamLine Console with Dual-Console StreamLine KVM Switch

The StreamLine combined with an advanced multi-access KVM Switch enables you to control multiple computers from one out of **two** different locations, **Local** as the StreamLine Console or **Remote** as another set of keyboard, mouse and monitor. SL-18 controls 8 computers and SL-216 controls 16 computers.



StreamLine Console

● Overview

The StreamLine Console is a 19" 1U drawer designed for applications where space is at a premium, or CRT displays are undesirable. It features a 15" flat panel TFT display, keyboard and a touch pad.

The drawer can be pulled out for operation from the rack on slides which latch in the extended position. When not in use, the display can be folded down, locked and secured while pushed in.

With different *Rear bracket & extension kit*, the StreamLine Console can be mounted on rack cabinet of various depths.

The console comes with standard PS/2 keyboard connector, PS/2 mouse connector and HDB15 VGA connector for computer or KVM switch connection.

● Features

- Modularized design
- Optional Master-IT PRO KVM switches available
- Flip-open 15" TFT LCD panel included with resolution 1024x768
- For rack cabinet with depth from 20" (50cm) and up (with appropriate *Rear bracket & extension kit*)
- Standard 19" 1U rack drawer
- Ergonomic hand rest design
- Locking mechanism locks the drawer when pulled out, pushed in, or folded down
- Full 105 key, low-profile, sturdy keyboard included
- Standard connectors for PC connection
- Quick and easy installation

● Pre-Packaged Configurations

StreamLine Model	StreamLine Console	KVM Switch Modules				RES-3 Rack Extension	Power Adapter
		SK-01 1-Port	SK-18 8-Ports	SK-208 8-Ports/w Dual Console	SK-216 16-Ports/w Dual Console		
SL-01	✓	✓				✓	✓
SL-18	✓		✓			✓	✓
SL-208	✓			✓		✓	✓
SL-216	✓				✓	✓	✓

● **Packing List**

These are required to install the StreamLine Console:

- **StreamLine Console:** assembled "LCD panel + keyboard + mouse pad" drawer + Power Adapter.



- **Rear bracket & extension kit:** This kit contains two pieces of rear brackets and two pieces of aluminum extensions. Make sure you have the correct kit to fit the depth of your cabinet. **Note:** the following lengths are+
 - measured between "front pole and rear pole *inside* a rack cabinet" not the *outside* depth of a rack cabinet enclosure.

Front Pole to rear pole distance	RES-1		RES-2		RES-3		RES-4	
	cm	inch	cm	inch	cm	inch	cm	inch
Minimum	49.5	19 ¹ / ₂	57.5	22 ⁵ / ₈	67.5	26 ⁵ / ₈	77.5	30 ¹ / ₂
Maximum	57	22 ³ / ₈	70.5	27 ³ / ₄	80.5	31 ⁵ / ₈	90.5	35 ⁵ / ₈



- **KVM Switch:** KVM module box can be connected to a StreamLine Console or be used as a stand-alone KVM switch.

Module type	SK-01	SK-18	SK-28	SK-216
No. of console port	1	1	2	2
No. of computer port	1	8	8	16
KVM switch inside	No	Yes	Yes	Yes
Model Indicator	1▶1	1▶8	2▶8	2▶16

- **Bolt-and-nut set**

- **User's manual**

1▶1 →
1▶8 →
2▶8 →

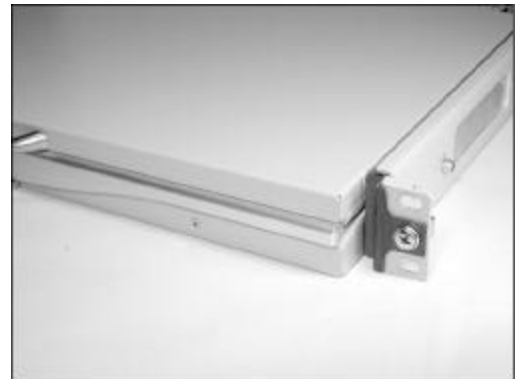


● Assembly

1. Choose a proper position for the rack drawer. Mount the rear brackets (from the *Rear bracket & extension kit*), and lightly fasten them onto the rear vertical poles. Both will be removed later.



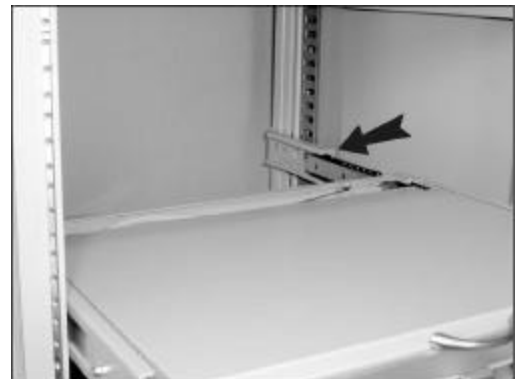
2. Remove the *stopper* from the assembled drawer. The *safety stopper* is designed to refrain the drawer from sliding out during transportation.



✂ **WARNING** ✂

After the *safety stopper* is removed, the drawer may slide out when tilted and cause serious injury.

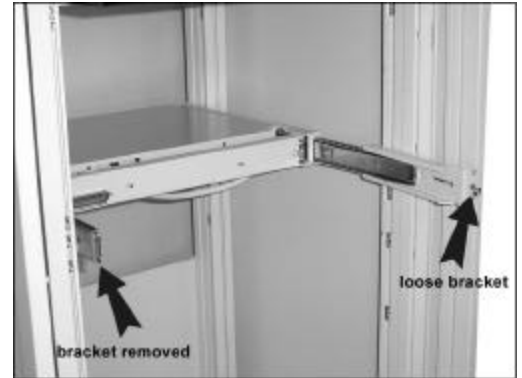
3. Slide the assembled drawer to the rack cabinet from the front and insert the two slide rails of the assembled drawer into the pockets of the rear brackets.



4. Fasten the assembled drawer onto the front brackets by four screws.

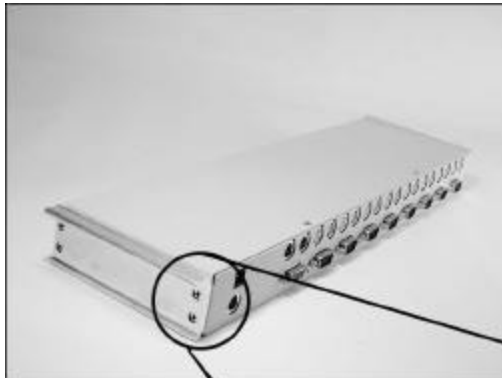


5. Remove both of the rear brackets. Now, the front brackets hold the assembled drawer.

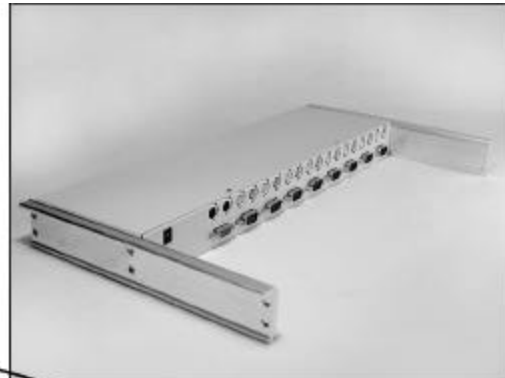


6. Attach the aluminum extensions (from the *Rear bracket & extension kit*) to both sides of the KVM module box. Please note the length of the aluminum extensions and mount them in one of the following ways.

Short aluminum extensions attachment

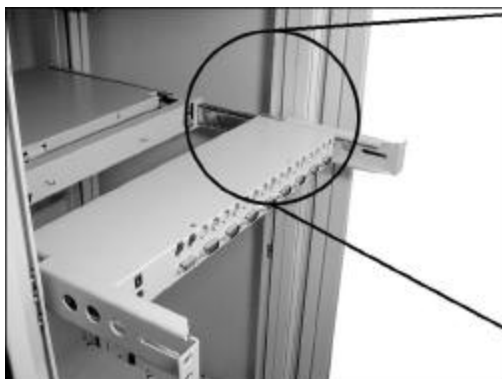


Long aluminum extensions attachment



wider side of the aluminum extension on top

7. The rear brackets, aluminum extensions and slide rails have tight fit. Make sure you follow these steps for easy installation. **A.** Slide the rear brackets onto the aluminum extensions. **B.** Then, insert both sliding rails of the assembled drawer into the tight space formed by the rear brackets and the aluminum extensions. The KVM module should be pushed in **evenly** on both right and left sides.



A



B

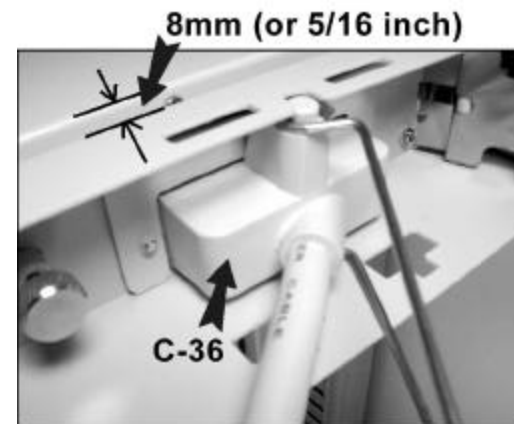
8. Push the rear brackets all the way in and fasten them.



9. Slide the assembled drawer out. Push the KVM module box **evenly** toward the drawer, and then lock both units by the screws.



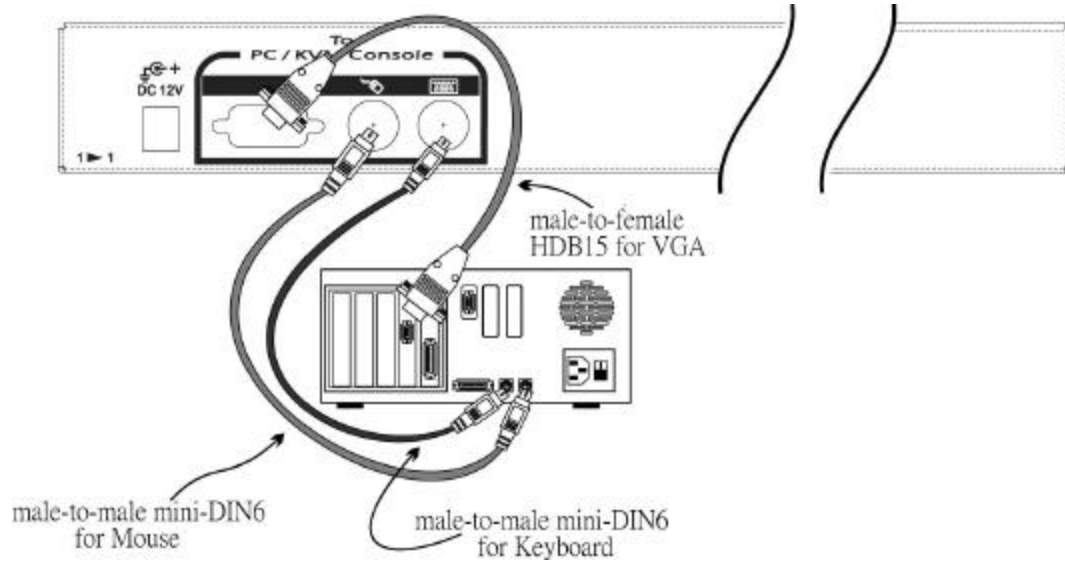
10. Make sure the C-36 connectors are firmly mated during step 10.



11. Connect the power supply to the power jack on the KVM module to complete the installation.

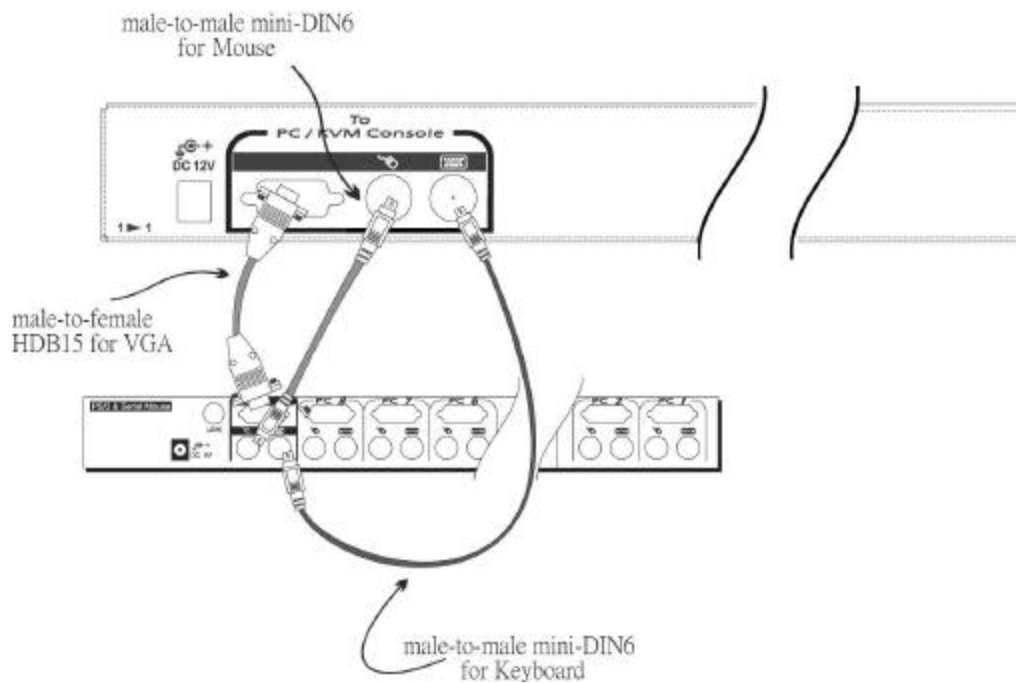
● Installation

Consider the StreamLine Console as a set of keyboard, mouse and monitor, and connect it directly to a computer with the 1 ▶ 1 KVM module.



StreamLine Console connects to a computer

Or, the StreamLine Console with the 1 ▶ 1 KVM module can be connected to a KVM switch as shown below.



StreamLine Console connects to a KVM switch

● Front Panel



■ KVM Control and Status: *(This section is effective only when an StreamLine KVM switch module is connected.)*

1. **Computer Selection Pad**

Press one of these pushbuttons to select a computer.

2. **Selected Computer Indicator**

One of the indicators turns red when pushbuttons, hotkey or OSD menu selects a corresponding computer.

3. **Local Console in operation**

It turns green when a computer is accessed through the StreamLine Console.

4. **Remote Console in operation**

It turns green when a computer is accessed by another set of keyboard/mouse/monitor connected to the **"Remote"** console when the KVM switch is either SK-28 or SK-216.

■ LCD Panel Control

5. **LCD Panel Menu**

These buttons invoke the OSD menu for the LCD panel and acts as menu selection.

6. **LCD Panel Adjustment**

Lets you adjust settings for the LCD panel.

■ Keyboard Status & LCD Panel Power Switch

7. **Num Lock**

Keyboard Num Lock status.

8. **Caps Lock**

Keyboard Caps Lock status.

9. **Scroll Lock**

Keyboard Scroll Lock status.

10. **LCD Panel Power Switch**

● LCD Panel Specification

LCD size	15.1" TFT
Active Display Area	304.1 x 228.1 (mm)
Pixel Pitch (mm)	0.297 (H) x 0.297 (V)
Resolution	1024 x 768 @60/70/75Hz
Brightness	200 cd/M ²
Contrast Ratio	400
Display Color	16.7M (8 bits)
User Control	OSD Control (auto saving)
Input Signal	RGB analog, H/V separate
Plug-n-Play VESA	VESA DDC 1/2B
Power Management	VESA DPMS compliant "on" mode: 23.2W "stand-by" mode <= 1W "suspend" mode <= 1W "off" mode <= 1W
Viewing Angle	(left/right) +80 ~ -80 (up/down) +80 ~ -80
Keyboard	105 Key, PS/2
Mouse Touch Pad	PS/2

× It is suggested to set the VGA resolution for all the computers to "1024 x 768" with "Large Fonts" in order to achieve the best performance for the TFT LCD panel.

Limited Warranty

IN NO EVENT SHALL ConnectPROs LIABILITY FOR DIRECT OR INDIRECT, SPECIAL, INCIDENTAL OR CONSEQUENTIAL DAMAGES, LOSS OF PROFIT, LOSS OF BUSINESS, OR FINANCIAL LOSS WHICH MAY BE CAUSED BY THE USE OF THE PRODUCT EXCEEDS THE PRICE PAID FOR THE PRODUCT.,

ConnectPRO™ makes no warranty or representation, expressed or implied with respect to the contents or use of this documentation, and especially disclaims its quality, performance, merchantability, or fitness for any particular purpose.

ConnectPRO™ also reserves the right to revise or update the product or documentation without obligation to notify any user of such revisions or updates.

All the brand names and registered trademarks are the property of their respective owners.



20525 Paseo Del Prado
Walnut, CA 91789
(888) 999-1983

www.connectpro.com

info@connectpro.com

PP5-SL-008
Printed in Taiwan